

# BLOCKAGE & BUILD-UP REMOVAL

AIRCHOC® - MACSYS



INNOVATIVE PROCESSES FOR BULK HANDLING



**STANAM  
INDUSTRIES**  
STANDARD INDUSTRIE International group

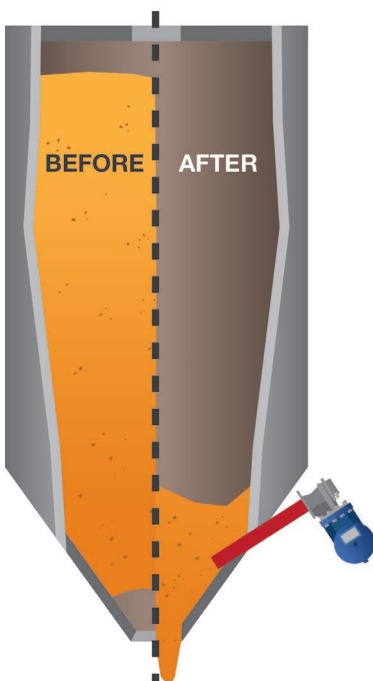
## OUR SOLUTIONS

Powerful and innovative solutions for eliminating clogging and build-up.

We offer preventive solutions to enable you to optimize productivity and help you to recover all your storage capacity.

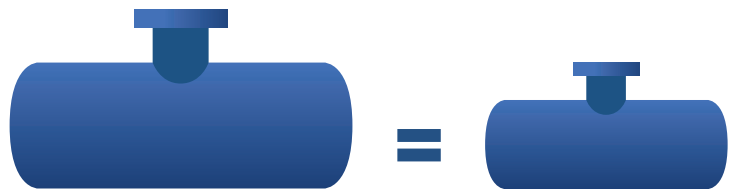
## OUR CUSTOMERS

- Cement plants
- Steel industry
- Foundries
- Thermal power plants
- Cleaning companies
- Glass factories
- Mines and quarries
- Limeworks
- Coke works
- Incineration plants
- Mills
- Food industry
- Petrochemicals
- Chemicals
- And more...



## CONTROL SHAPE

- **Impact:** Aerodynamics of the head / Ratio between the volume of the tank and the diameter of the head output
- **Safety:** No blast with air pressure drop
- **Quality:** Fully galvanized tank / cast iron head / extended lifetime
- **Maintenance:** Direct easy access to the mechanism.
- **Reliability:** Protected quick exhaust valve / self-aligning piston



*Less Consumption, same power for improved efficiency*

## RELATED SERVICES

- Visits & technical recommendations (dimensioning & positioning)
- Supply of the installation drawing.
- We offer complete installation of our equipment if needed
- Up to 3-year warranty
- After-sales service & maintenance contract
- Standards compliance

## OPTIONS

- **Stainless steel chamfer piston:** Increased life-span for aggressive atmospheres proof (chemicals, incineration, cement works)
- **Pneumatic distributor:** Activates AIRCHOC®/MACSYS blasts pneumatically by positive surge


## ACCESSORIES

- **Nozzles:** Direct the air flows towards sensitive clogging zones - Steel or refractory stainless steel version
- **Insulation device:** Secured maintenance operations: high temperature, aggressive products, back flow risk
- **Safety device:** Safe use AIRCHOC®/MACSYS (pressure gauge, pressure relief valve, shut-off valve etc.)

# AIRCHOC® - MACSYS

## YOUR ANSWER FOR BLOCKAGE & BUILD-UP REMOVAL:

### AIRCHOC®

- **AIRCHOC®** acts preventively on the product
- **Compressed air** from **13.2 US Gal** to **105.7 US Gal** [4 to 400 L] is instantly released through a suitable outlet port
- **2" to 8" [50 to 200 mm]** nominal outlet diameter
- Suitable for **high temperatures**
- Available option:  
**ATEX Zone 20** 
- Additional options:  
Automatic guillotine  
Control and monitoring unit
- More than **50 000 AIRCHOC® installations** in more than **90 countries**

## SOLUTION FOR SECURING AREAS WITH DIFFICULT ACCESS:

### MACSYS

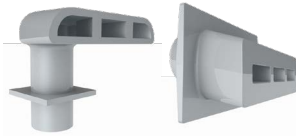
- Number of heads **2 to 8**
- Nominal outlet diameter of **4" to 8" [100 to 200mm]**
- Tank capacity of **52.8 US Gal [200 L]**
- **Reinforced metal** or **rubber** flexible tubes
- Suitable for **high temperatures**



## ACCESSORIES AND SPARE PARTS



Pistons



Deflectors



Guillotine isolator



Blowpipe

## AIRCHOC® MAINTENANCE PROGRAM

### THE MOST COST EFFECTIVE SOLUTION and a preserved environment

To eliminate the risk of production stoppage or excessive waiting time for the operators, **STANDARD INDUSTRIE** has developed a maintenance system:

- 1** A case containing a complete **AIRCHOC®** mechanism is kept in stock by the **AIRCHOC®** user.
- 2** As soon as maintenance is required, the used mechanism is simply replaced by the mechanism contained in the case.
- 3** The used mechanism is then simply replaced into the case and shipped to **STANDARD INDUSTRIE** to be cleaned and repaired by our specialized technicians.
- 4** The case is finally sent back to the user for use during the next maintenance.





# ***SWITCH TO THE NEWER GENERATION OF AIRCHOC® AIR CANNONS***

*For effective removing of build ups in your production process*

## ***User expectations***

*100% available air cannons*



*Cleaning performance*



*Economy of use*



## ***AIRCHOC®6 promises***

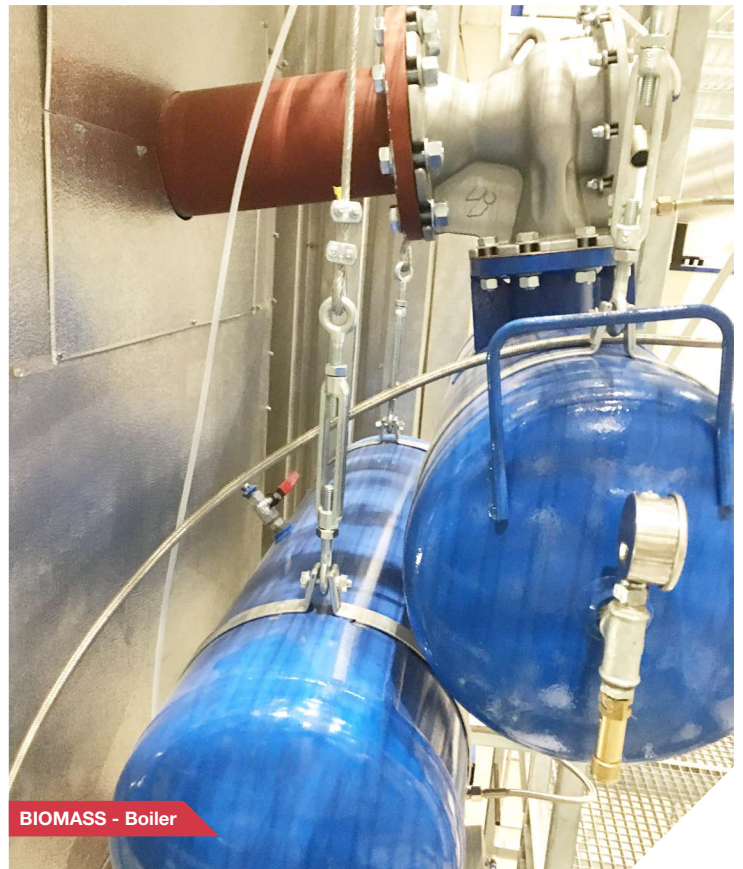
*3 years of shooting cycles without replacement of the trigger system*

*Better impact force on clogging  
10% higher than the previous version*

*Fewer spare parts and reduced air consumption*



**SAND - Storage hoppers**



**BIOMASS - Boiler**



# AIRCHOC® - MACSYS



INCINERATOR - Hopper under filter



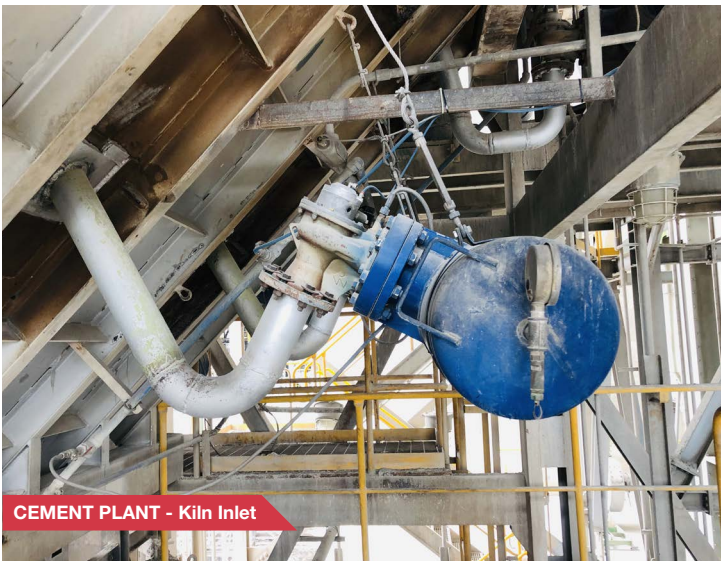
QUARRY - tunnel under stock pile



CEMENT - Feeding chute



CONCRETE PLANT - Silo



CEMENT PLANT - Kiln Inlet



FOOD INDUSTRY - Storage silo



# CONTACT US !

info@stanam-industries.com

## 11 BRANCHES & REPRESENTATIVES AROUND THE WORLD



USA



UK / IRELAND



SPAIN



SOUTH AFRICA



CANADA



MEXICO



ITALY



CHINA



FRANCE



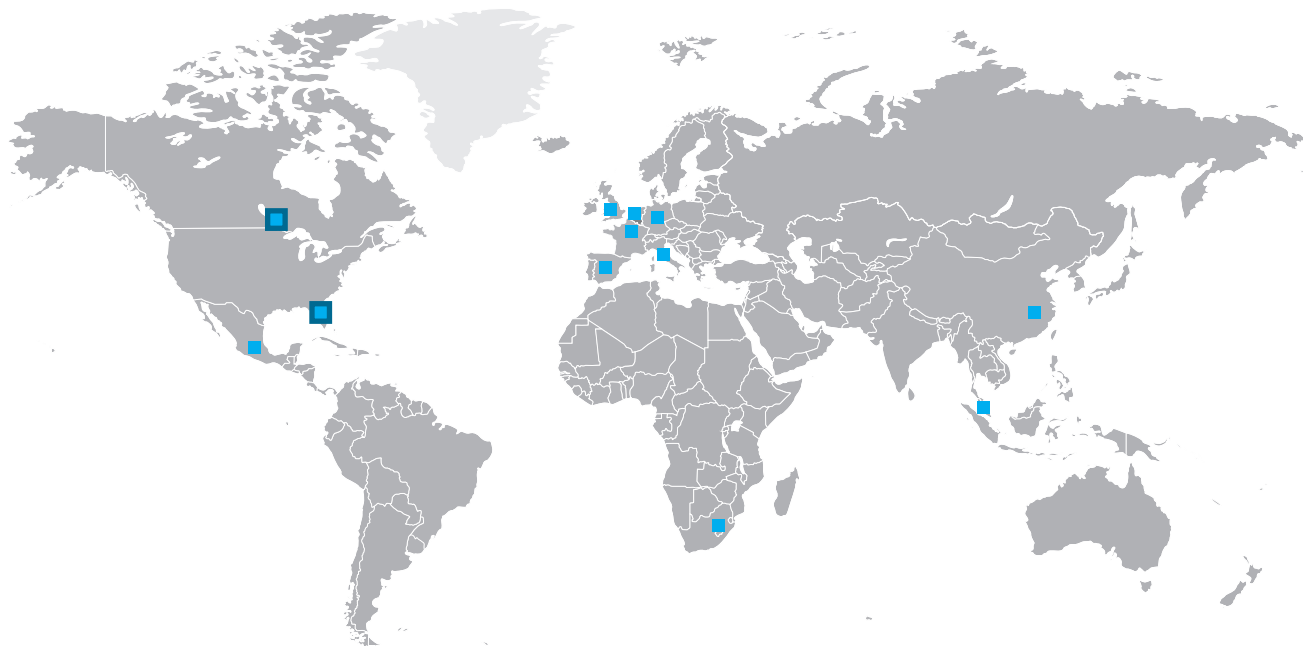
GERMANY



BELGIUM



SINGAPORE



INDUSTRIAL  
VACUUM CLEANING



CONVEYOR BELT  
OPTIMIZATION



SILO & HOPPER  
CLEANING SERVICE